



Olympic Mountain PET PALS

*Dedicated to better lives
for companion animals.*



**Boo Radley
Pratt**



Whiskey Pivarnik



**Buttercup
Towle**

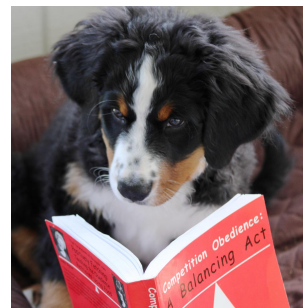


Sir Issac O'Neill

Read to Rover - the Next Generation

Long-time Volunteers Look Toward a Hopeful Future for Read to Rover with New Puppies to Train

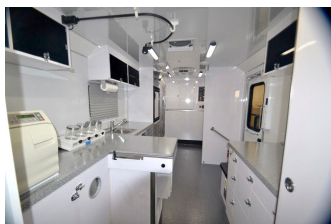
Over the years, Christina Pivarnik has had two dogs as Read to Rover partners, Georgia Towle has teamed up with four partners, Lana and Tim O'Neill have two current R2R dogs, and Kim Pratt has coordinated the program at Chimacum Creek since its beginning. Each of these volunteers now has a young dog getting ready to join the program in the near future. These volunteers, with their new crop of puppies-in-training, show a deep dedication to the on-going success of Read to Rover.



Our Partner's Progress on Building a Veterinary Surgical Trailer

Our partners at the Humane Society of Jefferson County are eagerly following progress on the construction of their new surgical trailer, which will be used for community spay/neuter clinics as well as serving shelter animals. The

trailer should be here by the end of April and meanwhile the twice-monthly clinics are being held using a borrowed surgical van from Spay to Save. Follow the construction progress at <https://hsjcwa.org/veterinary-surgical-trailer>.



Vision / Plan for Inside the Trailer

Center Valley Animal Rescue continues to provide two or three spay/neuter clinics per month in their on-site surgical unit. We are grateful to our partners for providing this service to the community and happy we can provide funding to sustain the clinics.

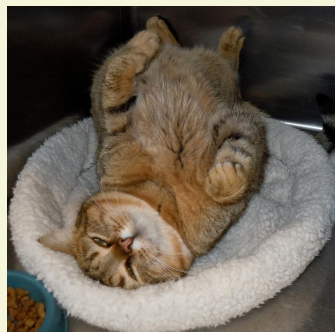
Visit our website

Short and Sweet

The exhibit of paintings of Read to Rover dogs by Kim Pratt at the Elevated Ice Cream shop was a big success. It was also very exciting that the show was featured on King 5 TV's Evening Show! This short segment included interviews of Kim and her art instructor, Julie Read. Some of the Read to Rover teams stopped by to show off their wonderful therapy dogs and talk about the joys of participating in Read to Rover. Click [here](#) to view the video (scroll up to the top of that page).



The photo shoot for King 5 TV's Evening Show



Please!

Belly rubs are nice, but a contribution to Olympic Mountain Pet Pals will have a bigger impact by supporting pet-related programs to benefit our local community.

Olympic Mountain Pet Pals is a 501(c)(3) (non-profit) organization. Please consider donating today.

Donate

Olympic Mountain Pet Pals
P.O. Box 1466,
Port Hadlock, WA 98339

Contact Us

(360) 385 3950



Olympic Mountain Pet Pals | P.O. Box 1466, Port Hadlock, WA 98339

[Unsubscribe_{recipient's email}](#).

[Update Profile](#) | [Customer Contact Data Notice](#)

Sent by carla@cs.duke.edu powered by



Try email marketing for free today!